

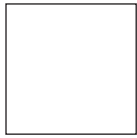
For orientation reference, vertical measurements are listed first, followed by horizontal measurements. However, pieces may be rotated to maximize paper usage.

To re-create the featured layouts, use the information below along with the how-to book *Cherish*.™ This book contains the layout dimensions, blueprints, and detailed instructions you need to create the supplemental layouts. The paper swatches shown below correspond with the book's cutting diagrams, making it easy to determine which papers should be used. Simply match the swatches with the letters designated in the Imagine pattern, and cut the paper pieces accordingly.

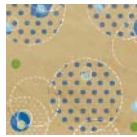
Cherish: Portrait Collection™ (page 76)



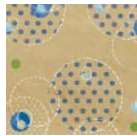
Bases (2) (omit pieces B and D—use base)



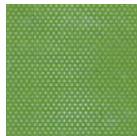
5" x 3½" Journaling piece



A



F



C and E

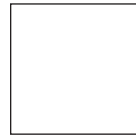


5" x 5" accent piece

Cherish: Beauty in Repetition™ (page 48)



Bases (2) (omit pieces A, E, F, and J—use base)



6" x 3" journaling piece, 2" x 2½" accent piece, and 1½" x 1½" accent piece



D and G



B and I



C and H



¾" x 2" accent piece and 1" x 2½" accent piece