

WORKSHOPS

ON THE GO

That's Amore Cutting Guide

This cutting guide is for 1 person.

For orientation reference, vertical measurements are listed first, followed by horizontal measurements. However, pieces may be rotated to maximize paper usage.

To re-create the featured layouts, use the information below along with the how-to book *Imagine*.™ This book contains the layout dimensions, blueprints, and detailed instructions you need to create the supplemental layouts. The paper swatches shown below correspond with the book's cutting diagrams, making it easy to determine which papers should be used. Simply match the swatches with the letters designated in the Imagine pattern, and cut the paper pieces accordingly.

Imagine: Supporting Cast™ (page 98) (rotated 180°)



Bases (2)(no cutting involved)



C and F



B and E



A, D, 2" x 2" accent piece, and 2½" x 2½" accent piece

Imagine: Up the Tempo™ (page 64)



Bases (2)(no cutting involved)



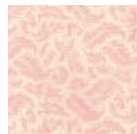
B, E, F (3), and L



I, J, and K



A, C, and G



D (back), H (back), 2½" x 2½" accent piece, 1¾" x 1¾" accent pieces (2), and 1½" x 1½" accent piece



3" x 3" accent piece, 1¾" x 1¾" accent pieces (3), and 1½" x 1½" accent pieces (3)