

WORKSHOPS

ON THE GO

Unforgettable Cutting Guide

This cutting guide is for 1 person.

For orientation reference, vertical measurements are listed first, followed by horizontal measurements. However, pieces may be rotated to maximize paper usage.

To re-create the featured layouts, use the information below along with the how-to book *Cherish*.™ This book contains the layout dimensions, blueprints, and detailed instructions you need to create the supplemental layouts. The paper swatches shown below correspond with the book's cutting diagrams, making it easy to determine which papers should be used. Simply match the swatches with the letters designated in the Imagine pattern, and cut the paper pieces accordingly.

Cherish: Creative Rhythm™ (page 36)



Left Base (no cutting involved)



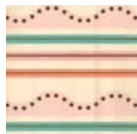
Right Base (no cutting involved)
(omit piece J—use base)



D (see diagram below)



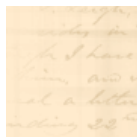
B, H, and N



C, E, K, and M



A, G, and L



F and I



2½" x 2½," 3½" x 3½," and
3" x 7" accent pieces

Cherish: Designer's Eye™ (page 70)



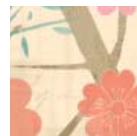
Bases (2) (no cutting involved)



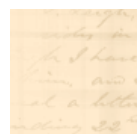
C, E, J, and K (see diagram below)



3" x 3" accent piece



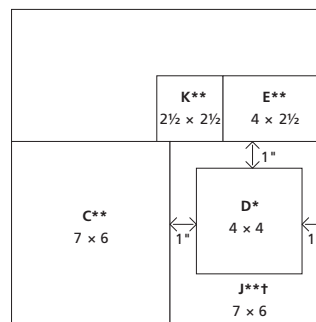
B, G, and H



D, I, and 3" x 3" accent piece



A and F



At times, the amount of paper remaining in your Level 2 paper packet requires precise cutting to create your additional scrapbook layouts. When this is the case, we provide a helpful cutting diagram that combines elements from both patterns onto a single sheet of paper for your convenience and cutting ease.

* *Cherish: Creative Rhythm*™

** *Cherish: Designer's Eye*™

† Cut outside mat first, then cut inside mat