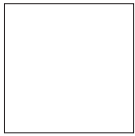


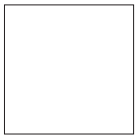
For orientation reference, vertical measurements are listed first, followed by horizontal measurements. However, pieces may be rotated to maximize paper usage.

To re-create the featured layouts, use the information below along with the how-to book *Imagine*.™ This book contains the layout dimensions, blueprints, and detailed instructions you need to create the supplemental layouts. The paper swatches shown below correspond with the book's cutting diagrams, making it easy to determine which papers should be used. Simply match the swatches with the letters designated in the *Imagine* pattern, and cut the paper pieces accordingly.

Imagine: In the Groove™ (page 21)



Bases (2) (no cutting involved)



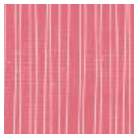
3½" × 11½" journaling piece



G (omit piece B; use My Stickease®)



A and D (2)



C and F



E

Imagine: Creative Team™ (page 104)



Bases (2) (no cutting involved)



C and F



B and E



A and D